

Remote Newfoundland & Labrador

SOUTH LABRADOR AND THE GREAT NORTHERN PENINSULA

June 11 – 21, 2025 | 11 Days

Outpost
communities

Stay at
an historic
property

Green Gardens,
Gros Morne

PRESENTED IN CONJUNCTION WITH



ALUMNI



ALUMNI

Walk on the Earth's mantle on the Tablelands Trail at Gros Morne



Get inspired by the views of Iceberg Alley

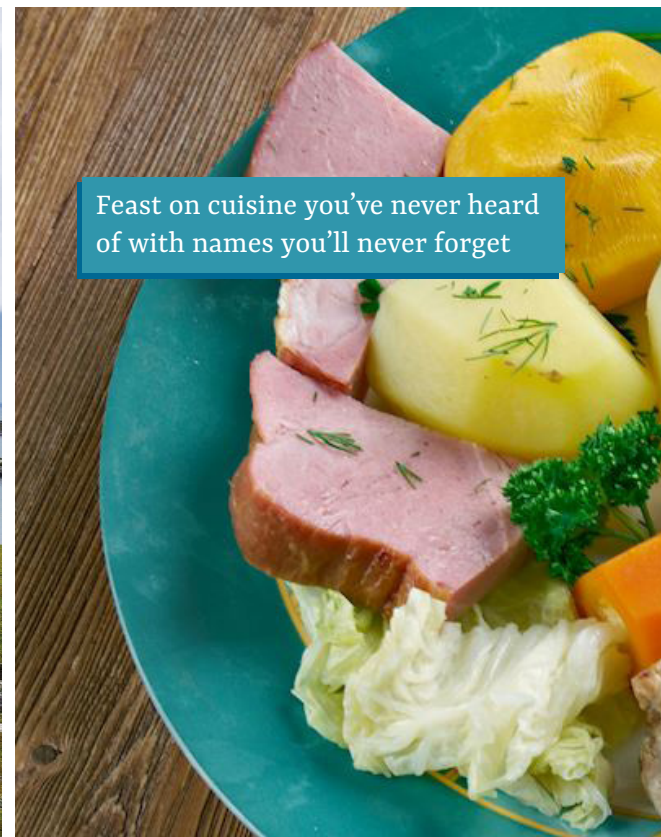
Explore Viking history at L'Anse aux Meadows



Connect with Labrador's history at Battle Harbour's Heritage Properties



Feast on cuisine you've never heard of with names you'll never forget





This tour is presented by the alumni associations of the University of Alberta, the University of Saskatchewan, Western University, McGill University, York University, and McMaster University. All are welcome!

There are places in Canada that continue to live inside of you long after you've travelled onward. Newfoundland's Great Northern Peninsula and Labrador are two of these destinations.

Explore places you've always dreamed of: Gros Morne; Battle Harbour; Red Bay; and L'Anse aux Meadows. Iceberg viewing, whale watching, ferry crossings, small-boat cruising, hiking and walking, and exploring living heritage are all part of this experience.

This is one of the best places to see and appreciate nature in all its glory with dramatic coastlines, sweeping barrens, thick boreal forest, and ancient rock formations. Walk on the Earth's mantle at the Tablelands and cruise the fjords in Gros Morne National Park. It's also where we imbibe the rich maritime tradition; touch the soul of Labrador's fishing heritage at Battle Harbour and learn about Basque whaling history at Red Bay. Medieval history is all around us as we explore the only known Norse outpost in North America at L'Anse aux Meadows.

Ocean-front accommodation puts you right in front of spectacular views. Notably, enjoy a two-night stay at the exceptional heritage property in the Battle Harbour Historic site. The warmth of a very special culture and tradition contrasts with the splendidly rugged geography in a cornucopia of rainbow-painted houses, a cuisine of cod tongue and crowberry pie, and fiddles and song.



Arctic Hare



Study Leader



Our Route



Detailed Itinerary

Wednesday, June 11: Meet in Deer Lake

Meet at Deer Lake Airport at 5 PM local time* for the transfer by coach to Rocky Harbour (about one hour travel time). Meet for a briefing and presentation by your study leader before dinner together at the Inn with spectacular views over the water.

Overnight: Gros Morne Inn

Meals: Welcome Dinner

**Please contact us prior to making your flight arrangements to verify this meeting time.*

Thursday, June 12: Gros Morne: Trout River Pond

Today on a Trout River Pond guided hike, we explore the contrasting landscapes of Gros Morne National Park. After a short drive to the small community of Trout River, we set out on our trail through the glacier-carved valley, winding first through Arctic alpine and boreal forests where there are chances of seeing Arctic Hares, Moose, and Caribou. The forests gradually dwindle until the trail entirely opens up to the spectacular Tablelands: a rugged landscape of mantle rock, specifically rust-coloured peridotite. Enjoy a picnic lunch while observing the stark contrast of the verdant hills on one side of the pond and the barren Tablelands on the other.

Overnight: Gros Morne Inn

Meals: Breakfast, Picnic Lunch, Dinner

Friday, June 13: Gros Morne: Tablelands boat tour and hike / Beach boil-up

It took 500 million years for Mother Nature to create the spectacular landscape of Gros Morne National Park. Today we continue to explore the spectacularly raw and enigmatic beauty of this UNESCO World Heritage Site. After a delightful picnic lunch on the shores of Bonne Bay, we enjoy both a Tablelands boat tour and hike. On the boat tour, we venture out on the saltwater fjord that is Bonne Bay where the Tablelands serve as a majestic backdrop while our onboard interpreter regales us with tales of local lore and provides insights about the spectacular geography here. Keep an eye out for Minke Whales, Atlantic White-sided Dolphins, and Bluefin Tuna! On the short hike, explore the isolated pockets of serpentine barrens that give rise to unique plant species and, as always, stay on the lookout for Moose! In the evening, have an authentic Newfoundland dining experience with a traditional beach boil-up of fresh local fare while overlooking the crystal-clear waters of Bonne Bay.

Overnight: Gros Morne Inn

Meals: Breakfast, Picnic Lunch, Dinner



Saturday, June 14: To Labrador

Today we head along the coast to the Labrador ferry at St. Barbe. We'll stop at the Port au Choix National Historic Site to explore a fascinating archaeological site amid a rugged coastline of limestone barrens, forests, and bays. This is where the sea's bounty drew Maritime Archaic, Dorset, Groswater, and Beothuk people long before Europeans arrived. At the Visitor Centre, see original artifacts and a replica Dorset dwelling, then walk the limestone barrens to view sacred burial groups, ancient settlements, and rare arctic wildflowers. Our route continues to St. Barbe whence we take the ferry (about two hours) across the Strait of Belle Isle to Blanc Sablon, Quebec and onward a short distance by coach to Forteau on the southern coast of Labrador.

Overnight: Northern Light Inn or similar

Meals: Breakfast, Dinner

Sunday, June 15: To Battle Harbour

An early start today takes us along Labrador's eastern coast to Mary's Harbour. Here we catch the ferry nine miles "out the bay" to one of the province's most spectacular settings. Prepare to be mesmerized by the rugged coastline, abandoned settlements, seasonal icebergs, and breathtaking views along the ferry route. The picturesque fishing port of Battle Harbour was established in the 1750s and is the best-preserved fishing village in the province. The mercantile premises have been lovingly restored to create comfortable lodgings and fine dining celebrating local ingredients. We spend two nights in this remarkable place.

Overnight: Battle Harbour Heritage Properties or similar

Meals: Breakfast, Lunch, Dinner

Restored chalupa



On the short hike to The Tablelands in Gros Morne National Park, we explore the isolated pockets of serpentine barrens that give rise to unique plant species and, as always, stay on the lookout for Moose!



Monday, June 16: Battle Harbour

Spend the day happily exploring the harbour, the residences, and outbuildings, and meeting some of the locals who still call the island home. This was once the salt fish capital of the world and tells the story of the decline of the fishery. This is where the explorer Robert Peary came with the famous Newfoundland navigator Captain Rob Bartlett to use the only telegraph station in Labrador to stake his claim on reaching the North Pole. Walk the footpaths worn by fishermen and merchants centuries ago, stepping on a geological artwork — three-billion-year-old gneiss run through the dark bands of basalt. Look out for whales and icebergs at sea and Arctic plants and wildlife on land. The night is full of bright stars!

Overnight: Battle Harbour Heritage Properties or similar

Meals: Breakfast, Lunch, Dinner

Tuesday, June 17: South along the coast

Today we drive back down along the south coast toward Newfoundland, enjoying a number of scenic stops along the way to sites like Red Bay and Forteau.

Overnight: Northern Light Inn or similar

Meals: Breakfast, Dinner

Wednesday, June 18: To L'Anse aux Meadows

Today we return to Blanc-Sablon and the ferry to St. Barbe. From here, we head across the Great Northern Peninsula to the historic site of L'Anse aux Meadows where Norse expeditioners from Greenland built small encampments of timber and sod against a stunning backdrop of rugged cliffs, bog, and coastline.

Overnight: Grenfell Heritage Hotel

Meals: Breakfast, Dinner



Thursday, June 19: L'Anse aux Meadows

Today is our opportunity to immerse yourself in this famed Viking settlement. Wander these fabled grounds, ever mindful of the tales of Thor, Loki, Erik the Red, and more from the Sagas. There should be plenty of time for us to take photographs and appreciate the layout of this remarkable site. Later, we have some opportunities to watch for icebergs drifting past the “top” of Newfoundland.

Overnight: Grenfell Heritage Hotel

Meals: Breakfast, Lunch, Dinner

Friday, June 20: Drive to Deer Lake

Today's drive takes us back to Deer Lake via the stunning coast to enjoy the spectacular scenery at stopping points where the views are best: Flower's Cove, Plum Point, and the Broom Point Lighthouse. We are staying overnight in Deer Lake, close to the airport.

Overnight: Deer Lake Motel

Meals: Breakfast, Farewell Dinner

Saturday, June 21: Depart Deer Lake

Transfer to the Deer Lake Airport this morning for homeward-bound flights — or continue your stay in Newfoundland; rent a car at the airport; or take the short flight to St. John's.

Meals: Breakfast

Note: The itinerary and accommodation described in this detailed itinerary are subject to change due to logistical arrangements and to take advantage of local events.

Red Bay





Tour Details

Tour Cost (per person): Approx. C\$6995 + 15% HST
Includes gratuities

Single Supplement: Approx. C\$2000 + 15% HST

If you are travelling alone and would like to share, we will attempt to match you up with an appropriate roommate. If we cannot, the single supplement will apply. This will be collected at 90 days prior to departure.

Group Size: 14 - 18 participants

What's Included:

- Arrival transfers on Day 1
- Accommodations based on double occupancy in hotels listed or similar
- Meals as specified in the itinerary
- Local entertainment
- Ground transportation by private coach
- All activities as described in the detailed itinerary
- Entrance fees to National Historic Sites visited as per the itinerary
- Gratuities for driver, guides, hotel staff, and group meals
- Services of your Study Leader
- Presentations by your Study Leader
- Fully escorted by our Worldwide Quest Tour Manager

Not Included:

- Roundtrip airfare from your home to join the tour
- Departure transfers on Day 11
- Meals other than those mentioned above
- Alcoholic beverages and bar expenses
- Fuel surcharge, if applicable
- Items of a personal nature
- Travel insurance
- Additional transportation required due to any emergency or other situation
- Any item not mentioned in "What's Included"

Payment Details:

A non-refundable deposit of C\$750 per person is required to reserve a space on this tour. A second payment of C\$2000 per person is six months prior to departure. Final payment is due 90 days prior to departure.

What To Expect



Joining Instructions

Arrival: Wednesday, June 11

This tour begins with your arrival at Deer Lake Regional Airport. Please ensure that you arrive by 5:00 PM for the transfer to our hotel at Gros Morne. This transfer is included in the cost of the tour. When you book the designated pre-trip accommodation with Worldwide Quest, your transfer from the airport to our group hotel on arrival is also included. If you are making your own pre-trip arrangements, this transfer can be provided at additional cost.

Departure: Saturday, June 21

The tour concludes in the morning following breakfast. We will transfer independently to the Deer Lake Regional Airport or points onward.



Travel Documents

Canadian citizens will require a valid government issued photo ID for this trip. US citizens will require a passport. Please ensure it is valid for at least 6 months beyond your scheduled return home.



COVID-19 Entry and Travel Requirements

All travellers on Worldwide Quest tours are required to be fully vaccinated and prepared to show proof of vaccination as per local regulations. Please refer to the below website for current requirements: **Canada:** <https://travel.gc.ca/travel-covid>



Weather

We expect a mix of sun and cloud with average daytime temperatures between 14 and 16°C and overnight temperatures between 3 and 7°C. Newfoundland and Labrador weather can be unpredictable. Please pack accordingly.



Transportation

We will be travelling in a comfortable, air-conditioned 28-seater coach driven by a professional driver. We will be transferring from the mainland to Battle Harbour Properties by boat.



Level of Activity: Moderate

While this is not a particularly strenuous trip and none of our hikes are particularly long or fast, you should bear in mind that we will be walking on rough paths or pebbly beaches. You should be able to walk unassisted for up to two hours at a stretch. We will be taking several boat cruises; you should be comfortable getting in and out of vessels with assistance. We will have some drives of a few to several hours in length. We will make various comfort stops along the way.



#SafeTravels

Worldwide Quest has been awarded the World Travel and Tourism Council's #SafeTravels Stamp for adopting health and hygiene global standardized protocols. [Learn more.](#)



Accommodation

We are staying in the best available accommodation with exceptional hospitality throughout the tour:

Gros Morne Inn offers generously proportioned and bright guestrooms with ocean and mountain views as well as large picture windows. The inn is set among forested hills, seemingly tucked away from it all. Enjoy locally sourced foods at the restaurant.

Northern Light Inn is a family-run operation with 70 rooms and a wide range of amenities. Its critically acclaimed hotel is known country-wide as a go-to place to eat.

Battle Harbour Heritage Properties make for an exceptional experience within the National Historic Site. You've never been anywhere quite like this! Each comfortable, well-appointed room has its own character and history. If only the walls could talk...

Grenfell Heritage Hotel & Suites is conveniently located in the heart of St. Anthony, Newfoundland, near the top of the Great Northern Peninsula and just 35 minutes south of L'Anse aux Meadows National Historic Site. WIFI is available.

Deer Lake Motel is a Four Star Canada Select property with modern, comfortable rooms conveniently located close to the Deer Lake Airport. It offers a fitness rooms on-site. WIFI is available.



Gros Morne Inn



Battle Harbour Heritage Properties



Grenfell Heritage Hotel & Suites

Additional Info

Terms and Conditions

For additional information about our terms and conditions, please refer to your booking form, the current brochure or our website. All participants booking with Worldwide Quest are covered by the terms of the Ontario Travel Industry Act (Worldwide Quest International, Ontario – License # 2667946). See full details [here](#).

Cancellation Policy

All payments are non-refundable; however, you may transfer your initial deposit for any land tour to another tour 90 days or more prior to your scheduled departure date. Initial deposits for cruises are non-refundable and non-transferable. Your second payment and your final payment are non-refundable and non-transferable. If you cancel within 90 days prior to trip departure, all associated trip costs are non-refundable. In the event of a cancellation, you must notify Worldwide Quest immediately and in writing. See full details [here](#).

Travel Insurance

We urge you to ensure that you have adequate cancellation and medical insurance in place, should an unexpected event cause you to cancel or interrupt your trip or should the tour not be operable per our terms and conditions. We will offer you Manulife insurance coverage. Medical insurance including emergency medical evacuation coverage is mandatory on all our tours.



How to Book

Please contact the Worldwide Quest office for more information and to secure your booking.

1-800-387-1483 | 416-633-5666
travel@worldwidequest.com



TICO#: 2667946